

**DINSE MIG/MAG flat wire:
High-performance
welding technology**



Welding without Limits

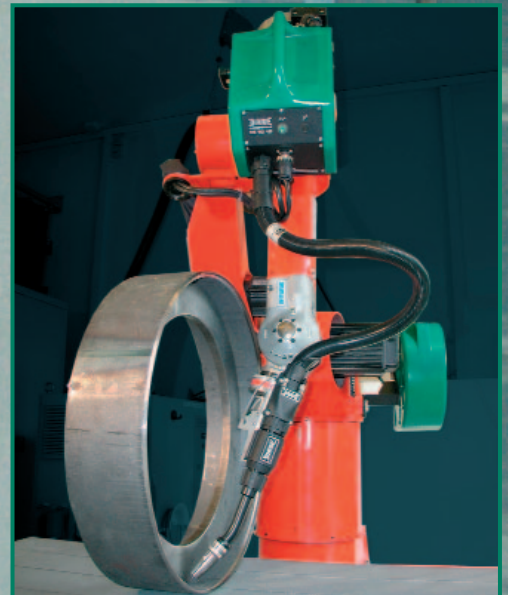
DINSE MIG/MAG high-performance flat wire welding:

Safe and economical for

- high welding speed
- large deposition volume
- simple handling



**The future in
applications for
vehicle manufacture,
engineering and
tank construction.**



DINSE MIG/MAG flat wire: High-performance welding technology



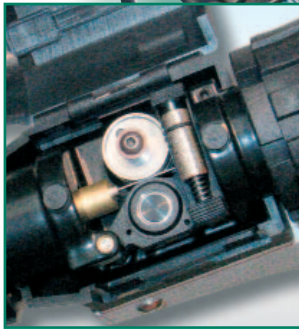
MIG/MAG welding in its most advanced form

DINSE's successful MIG/MAG flat-wire welding system blends the advantages of single and double-wire welding.

Renowned manufacturers from the automotive industry use DINSE's future-oriented technique to increase productivity and profitability. DINSE's MIG/MAG welding system provides flexible operation. It can also be used with normal round wires.



DINSE's compact GREENline robotic wire-feed system conveys flat wire powerfully and stably.

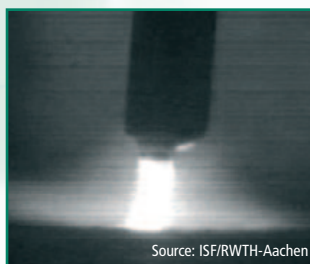


PUSH-PULL drive

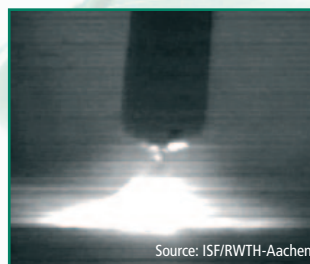
Equivalent cross-section area of round ($d = 1.6 \text{ mm}$) and flat wires ($4.0 \times 0.5 \text{ mm}$). Identical contours of the welding torch, many common consumables.



Flat-wire arc characteristic, drop formation (left) and drop transfer (right).

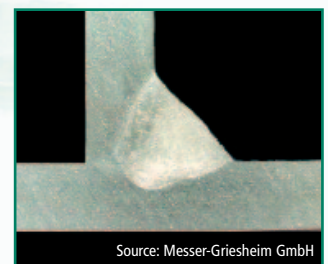


Source: ISF/RWTH-Aachen



Source: ISF/RWTH-Aachen

Typical penetration profile of MIG/MAG flat-wire welding.



Source: Messer-Griesheim GmbH

The most important technological advantages at a glance:

- High welding speed
- Large deposition volume
- Compared with 2-wire solutions: Easy setting of parameters, very high component accessibility
- Favourable gap bridging properties, high production safety



MIG - flat-wire welding of aluminium, welding speed: 2 m/min.

